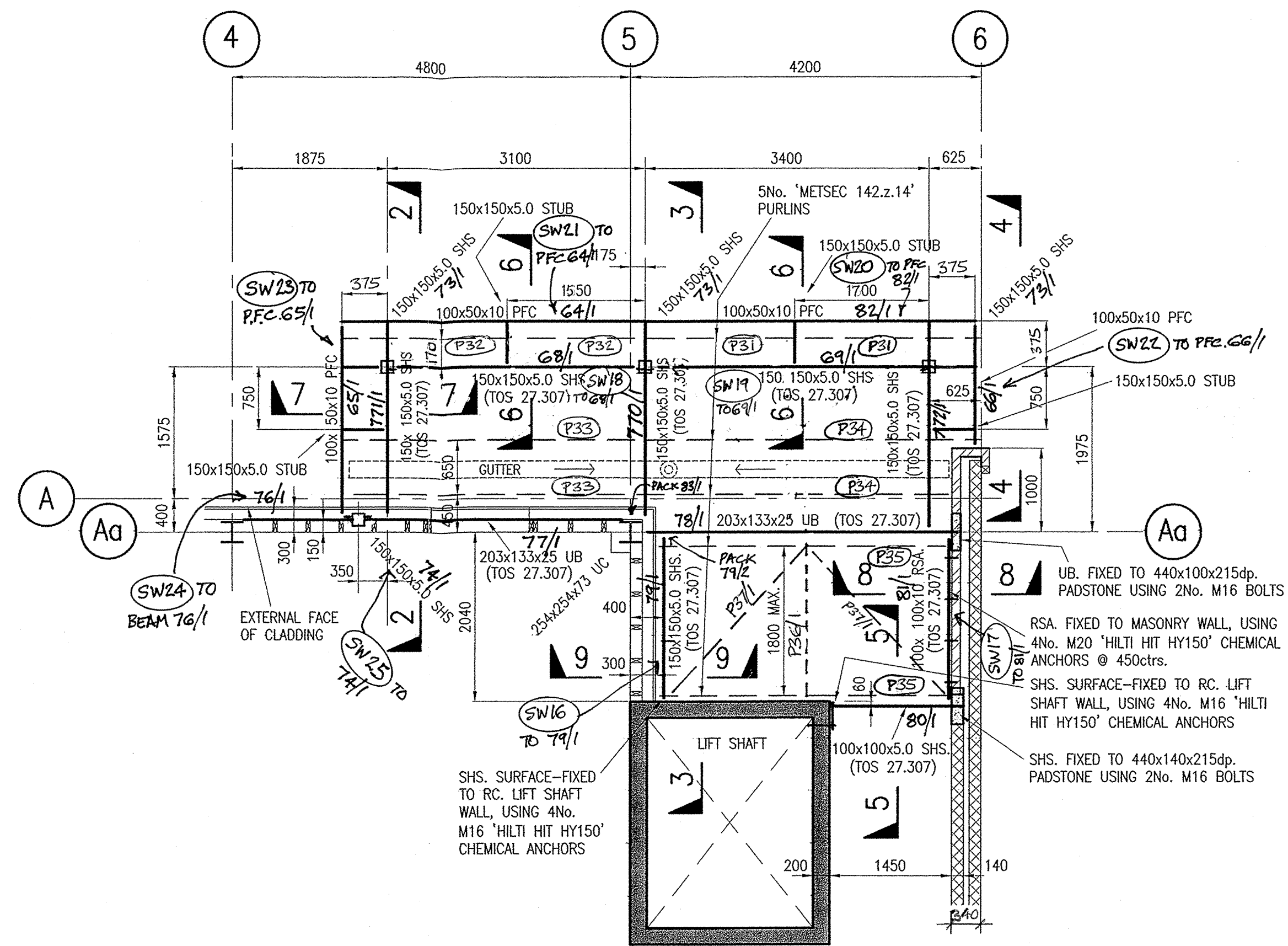


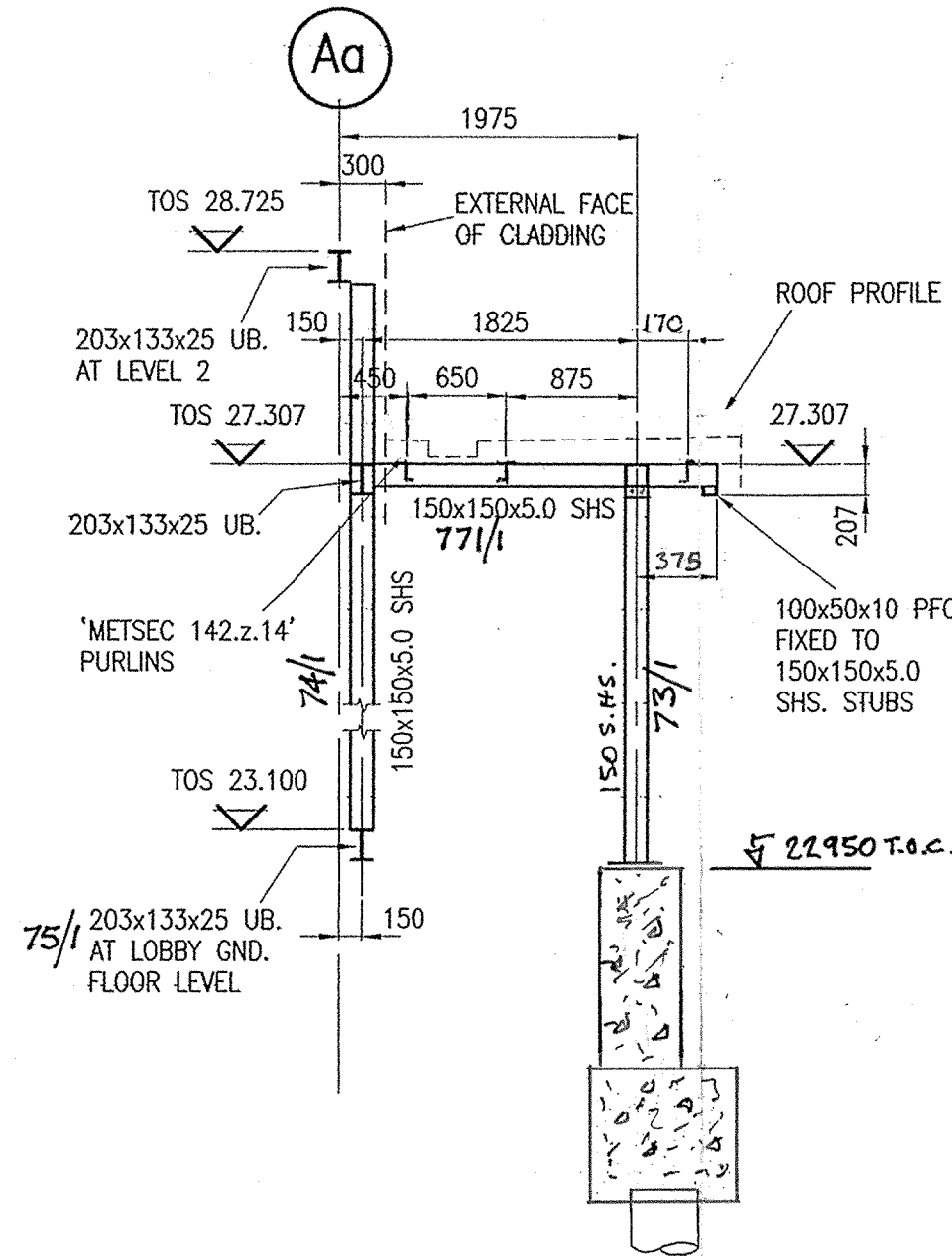
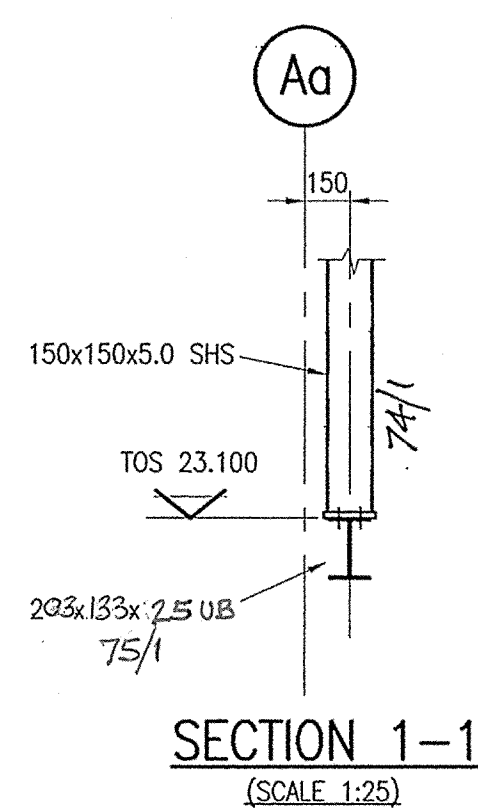
PLAN AT LOBBY GROUND FLOOR LEVEL

1:50



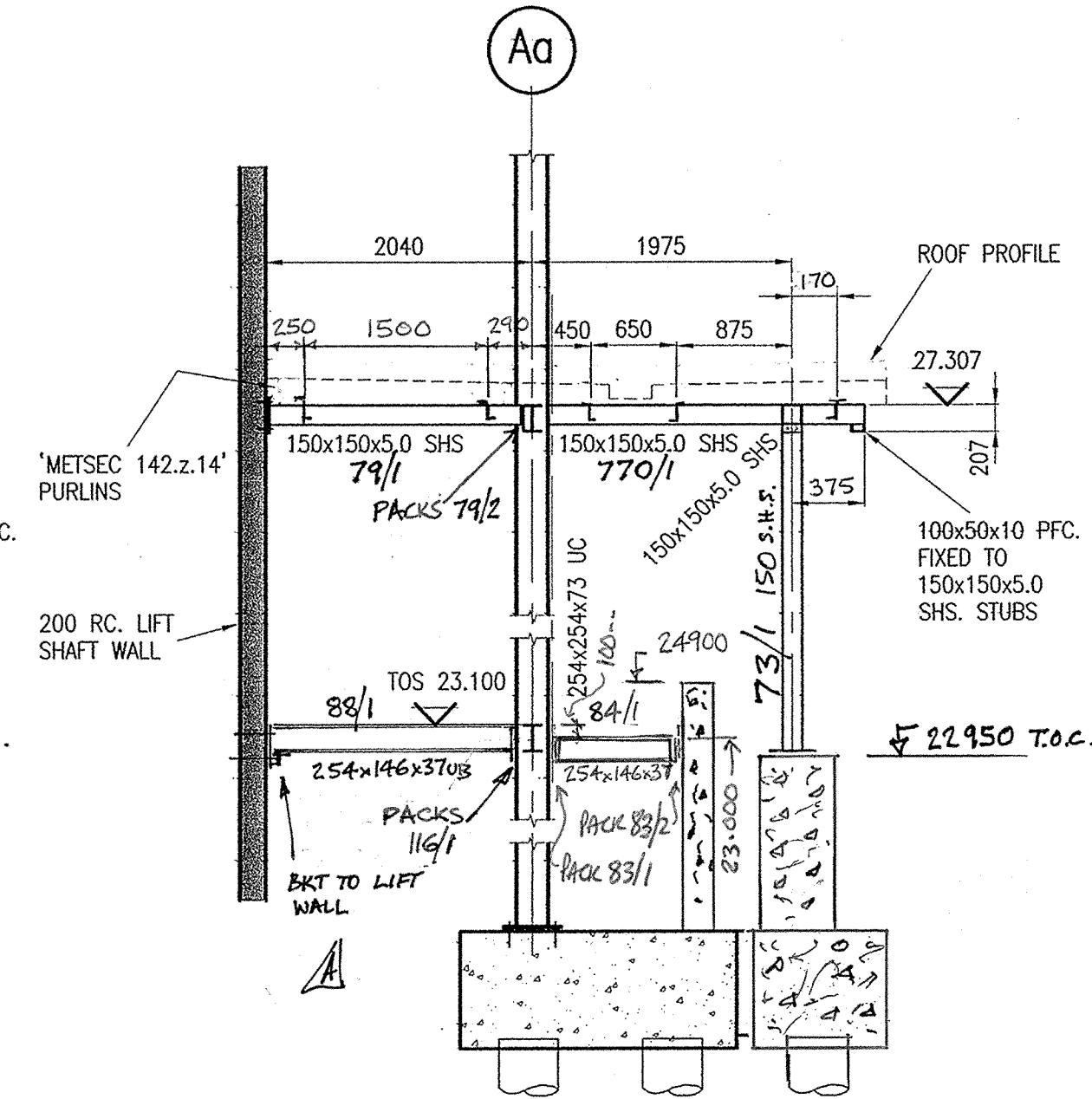
PLAN AT LOBBY ROOF LEVEL

1:50



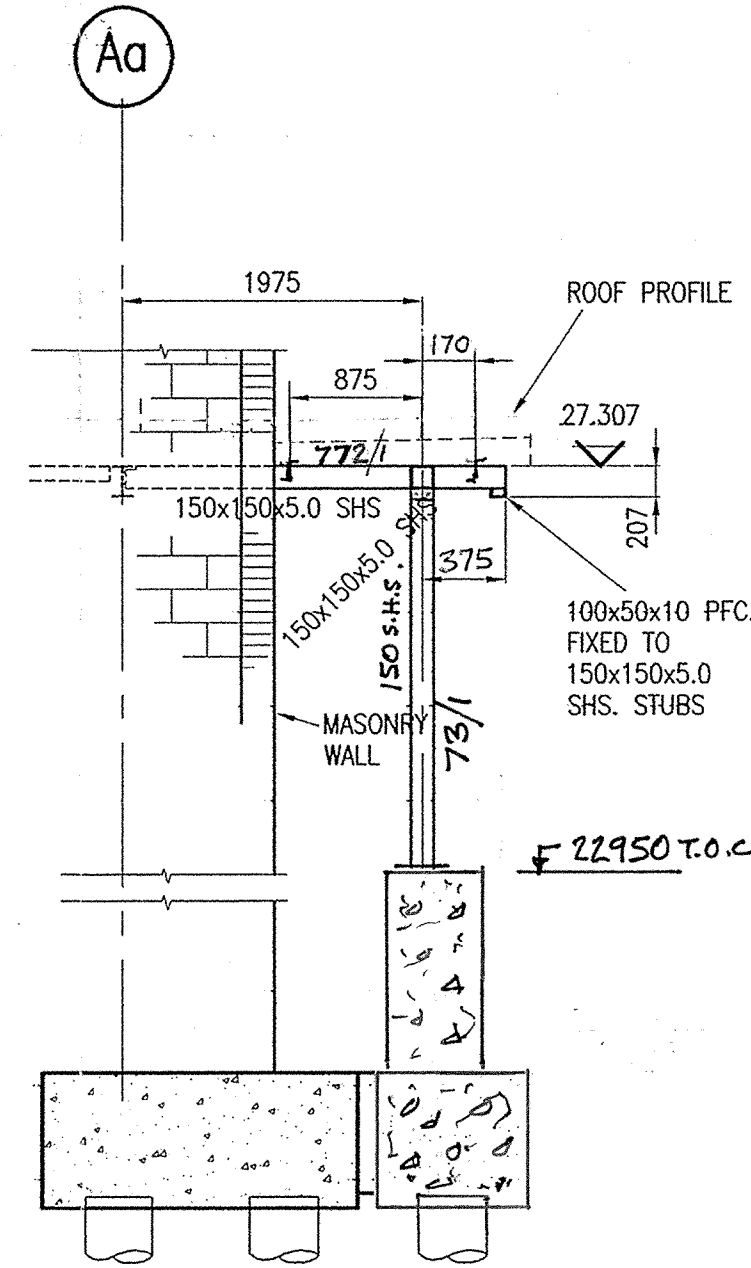
SECTION 2-2

1:50



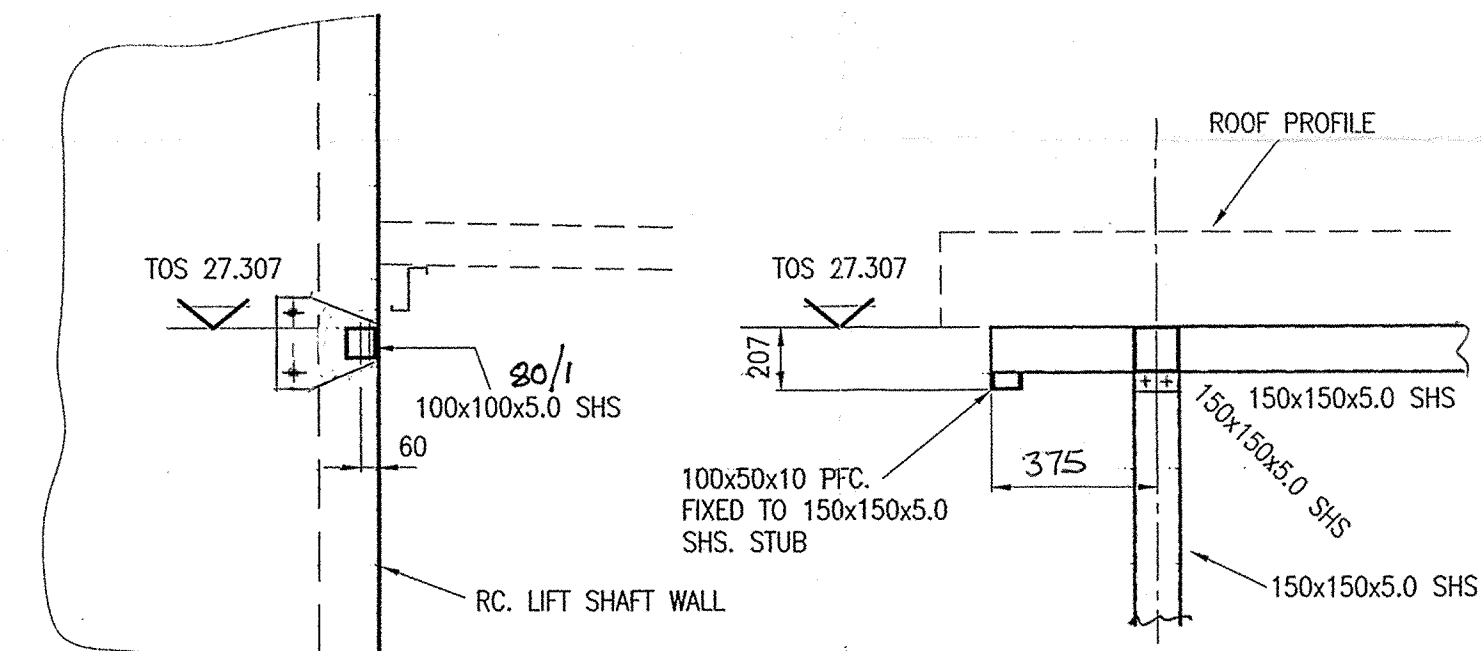
SECTION 3-3

1:50



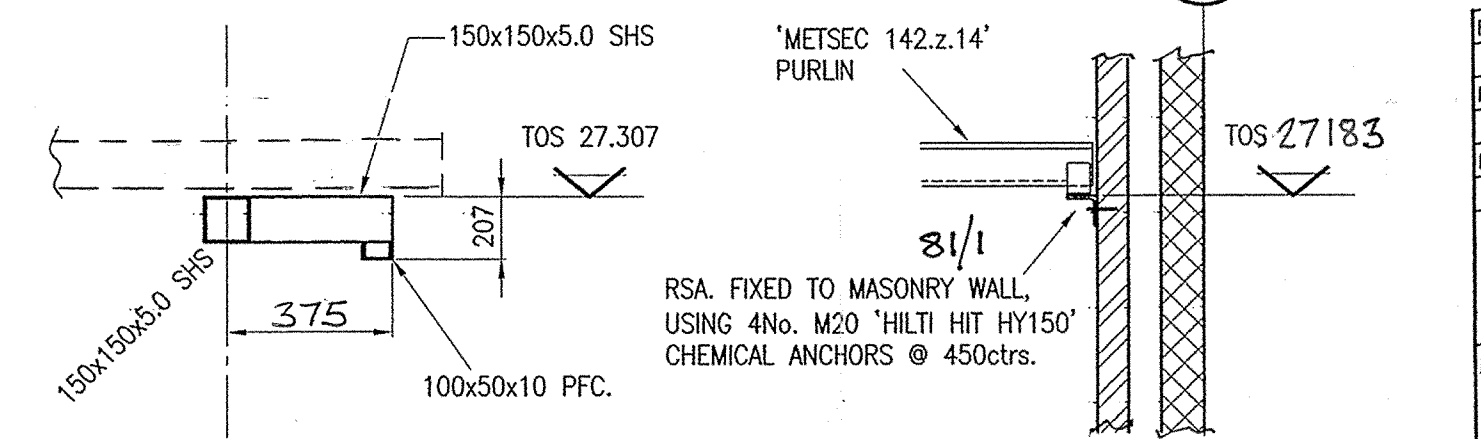
SECTION 4-4

1:50



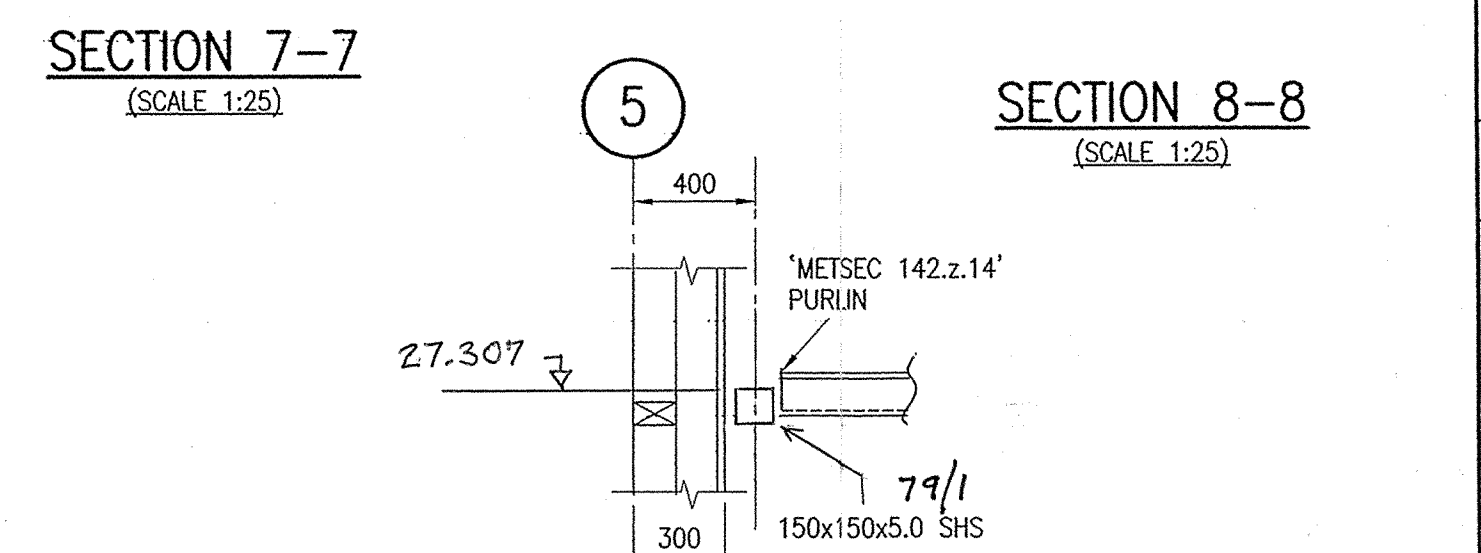
SECTION 5-5

(SCALE 1:25)



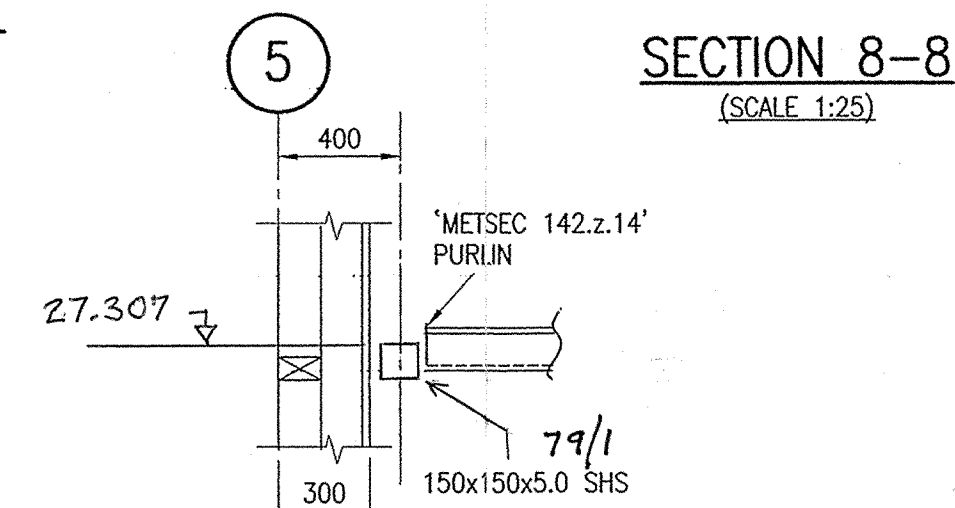
SECTION 6-6

(SCALE 1:25)



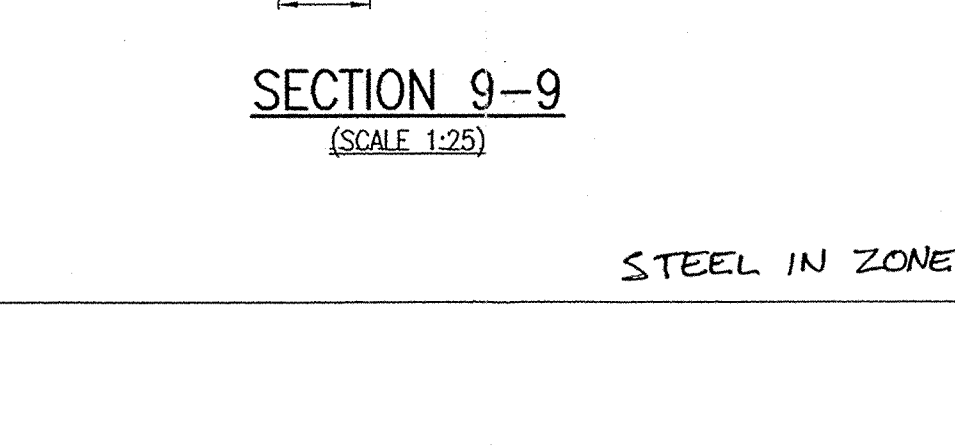
SECTION 7-7

(SCALE 1:25)



SECTION 8-8

(SCALE 1:25)



SECTION 9-9

(SCALE 1:25)

STEEL IN ZONE 7

NOTES

STEELWORK NOTES:

1. ALL STEELWORK TO BE S275 TO BS EN10025 UNLESS NOTED OTHERWISE.

ANYALL SITE WELDING TO L-COOPER STEEL STRUCTURE MUST BE DONE USING LOW HYDROGEN WELDING RODS (SUITABLY DRIED IN AN OVEN) OR SIMILAR.

ALL SHS, RHS & CHS SECTIONS ARE GRADE S355 UNLESS NOTED OTHERWISE.

RECEIVED
16 APR 2007
L.C.

REV C	
REV B	PURLINS LOWERED & PERIMETER CANTILEVER REDUCED FROM 550 TO 375. 84/1 DELETED 100mm. HMB 25/7
REV A	REVS C LOBBY GROUND FLOOR & SECTIONS 2-2 HMB 25/4
P.AINT:	
IDENTIFICATION MARKS MUST BE PLACED ON	
A) TOP RIGHT HAND END OF BEAMS/MEMBERS OR	
B) COLUMN WHERE INDICATED THUS: [MARK]	
FABRICATION TOLERANCES TO	
BS 5850 PART 2 (U.N.O.)	
(SHOWN ON L.C. PROCEDURES MFS-23)	
Leonard Cooper Limited	Structural Engineers
COOPER	Registered Office: Balm Road, Hunslet Leeds LS10 2AF Telephone: 0113 270 5441 Facsimile: 0113 276 0659 Registered No. 157872 London
TITLE: QUARMBY CONSTRUCTION, WAKEFIELD WATERFRONT BLDG. 20. G.A. OF STEEL TO ENTRANCE LOBBY	
SCALE	
RELEASED FOR	SIGNED:
FABRICATION/RECTION	DATE:
DRAWN BY	DRG. NO.
CHECKED BY	07/18/006 'B'